



## GARDEN GROVE UNIFIED SCHOOL DISTRICT INFORMATION Technology DEPARTMENT

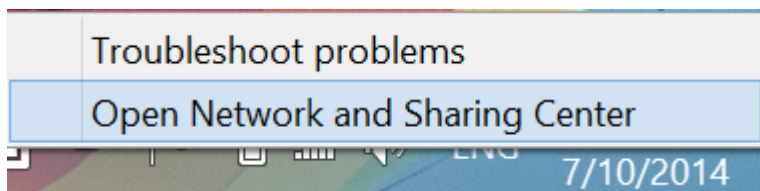
\*\*\*\*\*

### Connecting a Personal Windows Laptop to the District Wireless Network

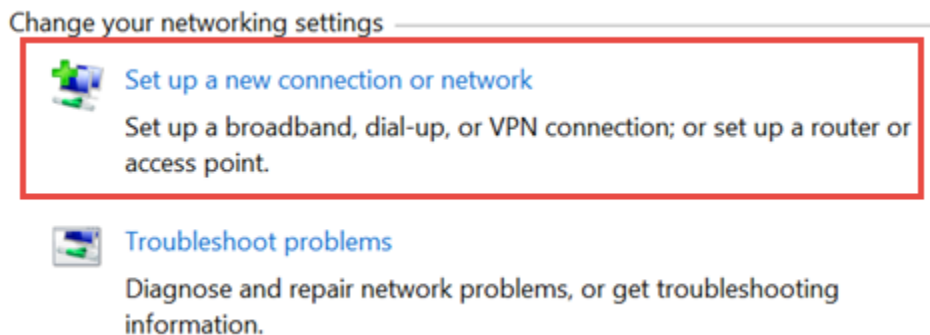
#### Configuring The GGUSDPersonal Network

To add the SSID of ggusdpersonal, go to your desktop and **right click** the below wireless icon and choose the **open network and sharing center** as shown below.

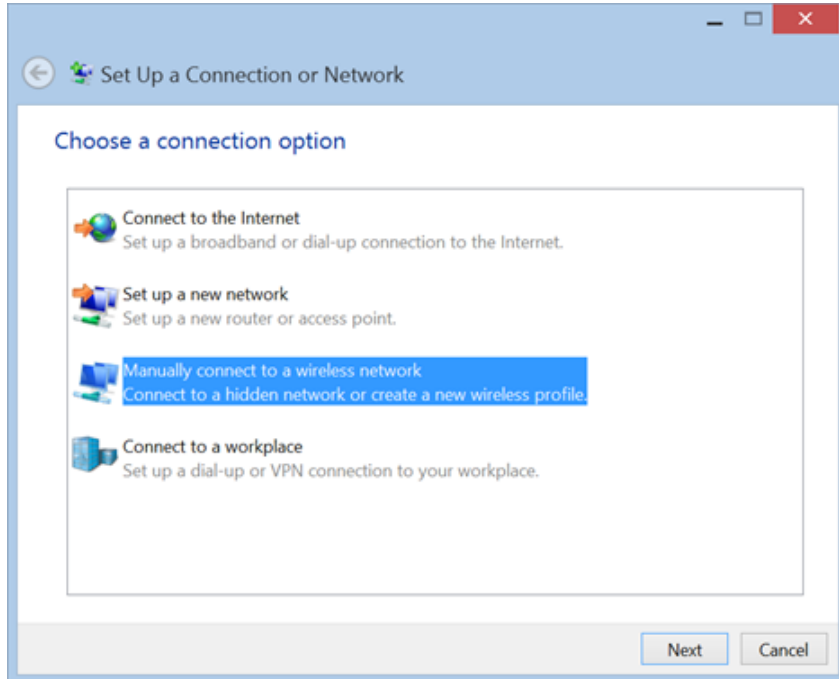
the system tray and click "*Open Network and Sharing Center.*"



Choose the "**Set up a new connection or network**" from the options below



Select "**Manually connect to a wireless network**" and click or tap "**Next.**"



Enter the security information for the network in the spaces provided, as follows

Enter the SSID in the network name field of **ggusdpersonal**.

1. In the security type field choose **WPA2 Enterprise**
2. In the security key field, **leave blank**.
3. Leave the **Start this connection automatically** box blank

4. You should also check the box that says **Connect even if the network is not broadcasting**. Hit **Next** to finish this section

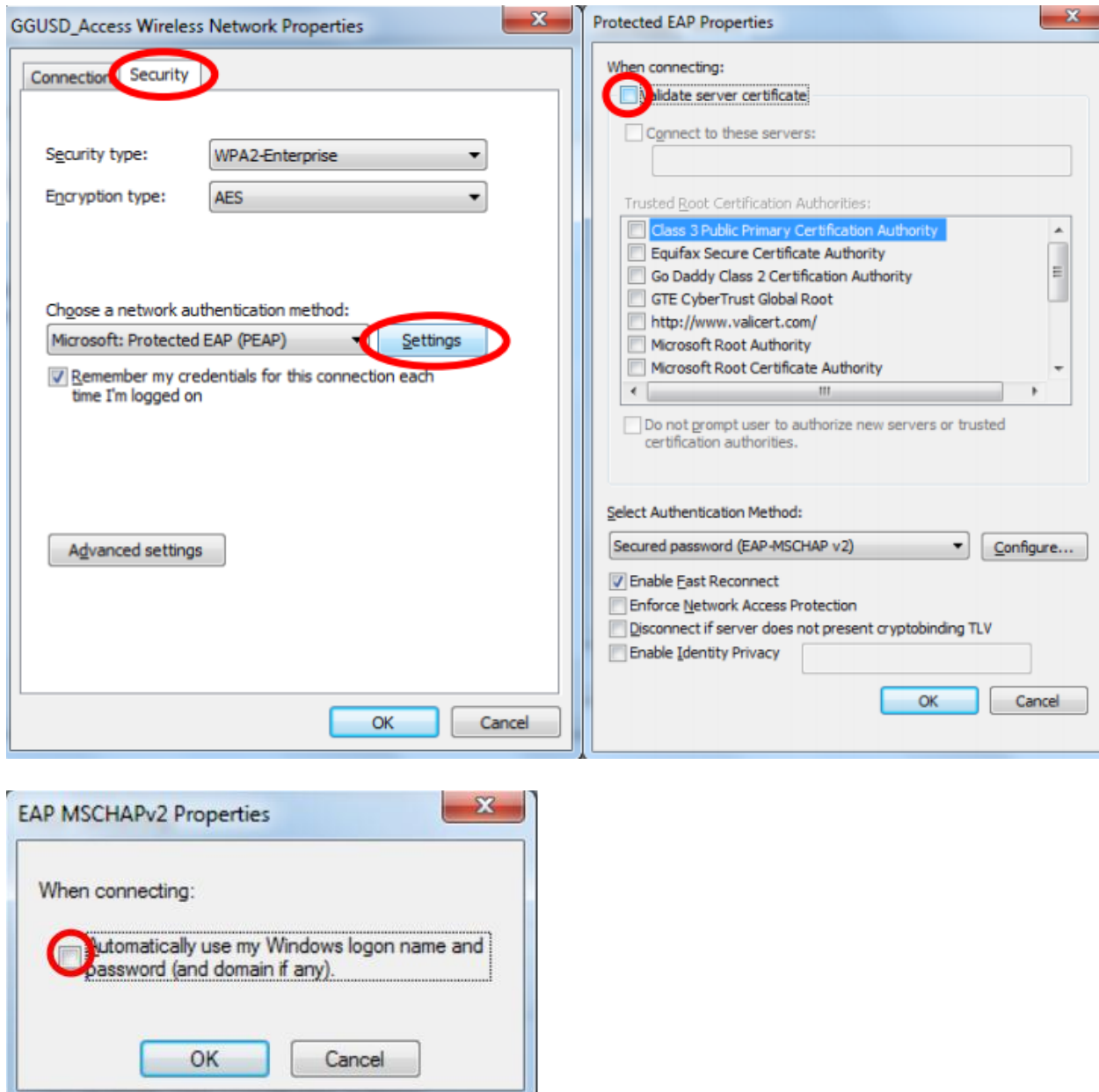
The screenshot shows the 'Manually connect to a wireless network' window. It contains the following fields and options, each with a red circle and number indicating a step:

- 1. Network name:
- 2. Security type:
- 3. Security Key:  (with a 'Hide characters' checkbox)
- 4. ☐ Start this connection automatically
- 5. ☒ Connect even if the network is not broadcasting (with a warning: 'Warning: If you select this option, your computer's privacy might be at risk.')
- 6.  (and a 'Cancel' button)

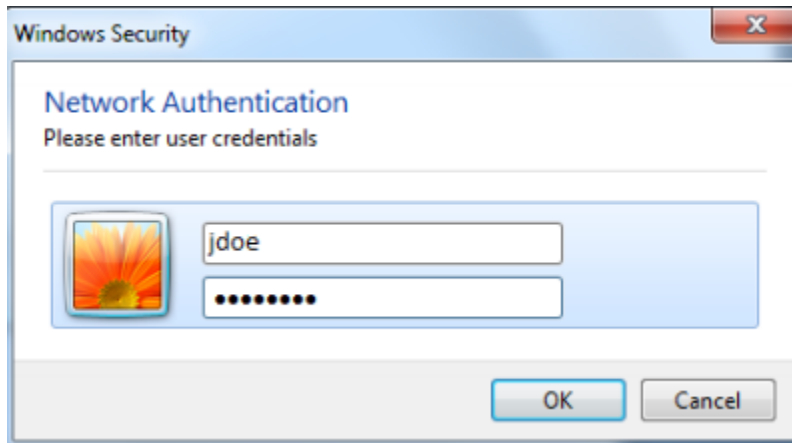
You are notified after successfully adding the wireless network with the below screen. Press **Change connection settings**.

The screenshot shows a notification window titled 'Manually connect to a wireless network'. It displays the message 'Successfully added ggusd personal'. Below this, there is a red-bordered box containing a green arrow icon and the text 'Change connection settings' followed by 'Open the connection properties so that I can change the settings.' At the bottom right of the window is a 'Close' button.

The following was grabbed from our Windows 7 tutorial which basically outlines the same settings that need to be changed on windows 8.



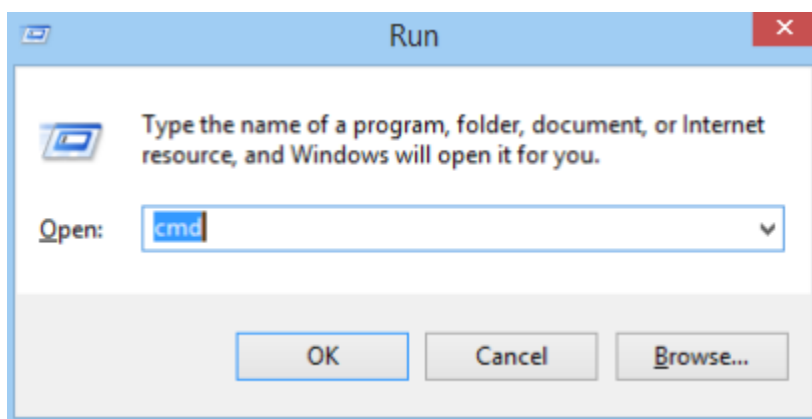
After making the above changes you will see the below where you can enter your email information.



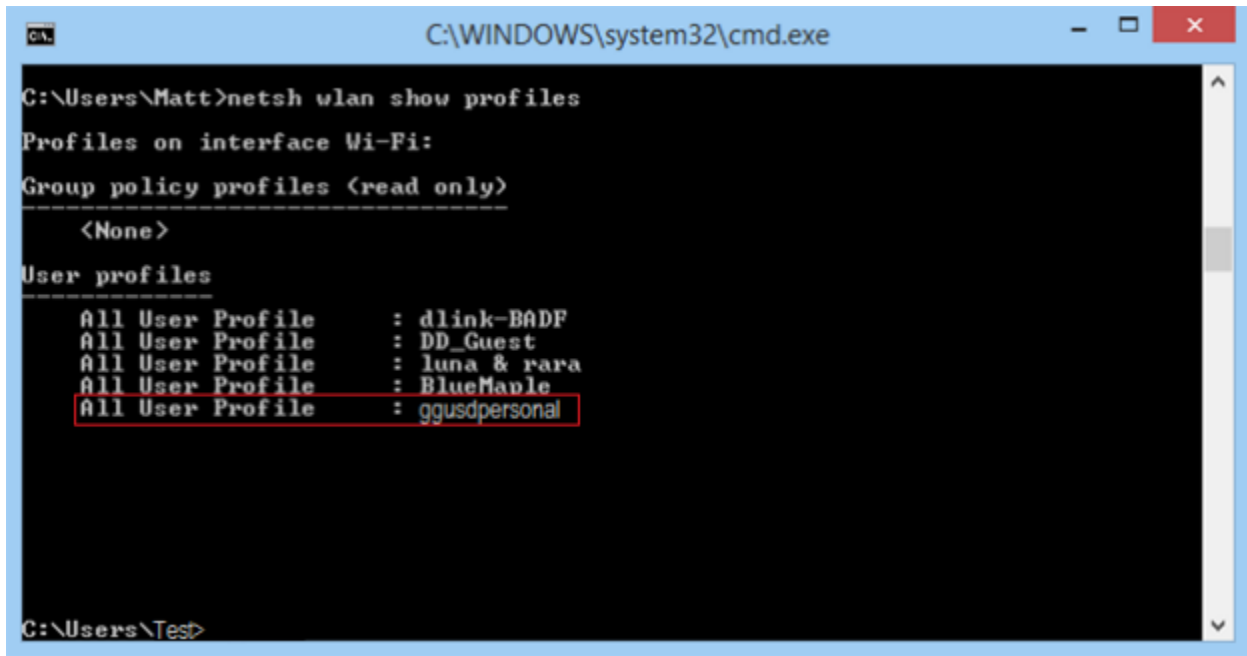
Please also remember when you **change your Aeries/Email** password, you will need to redo all the steps outlined above otherwise your account will get locked out so please keep this tutorial handy. If you need to update your account after a password change, follow the below information.

## Updating Your Credentials when Your Password Changes

On Windows 8, hit the "**WINDOWSKEY + R**" and type in **cmd** in the space you see.



Once in the prompt screen, type **netsh wlan show profiles**:



```
C:\WINDOWS\system32\cmd.exe

C:\Users\Matt>netsh wlan show profiles
Profiles on interface Wi-Fi:
Group policy profiles (read only)
-----
<None>
User profiles
-----
All User Profile : dlink-BADF
All User Profile : DD_Guest
All User Profile : luna & rara
All User Profile : BlueMaple
All User Profile : ggusdpersonal

C:\Users\Test>
```

Going through that list you will see **ggusdpersonal**. Type in the command, **netsh wlan delete profile name=ggusdpersonal**. Once issuing the command, it will say the profile has been deleted.

To verify if the command actually deleted the ggusdpersonal, type in the **netsh wlan show profiles** and verify that the **ggusdpersonal** shouldn't show up on the list.

Now, to add the SSID of ggusdpersonal, follow the beginning of this tutorial. Any questions you can email us or call us.

Regards,

-Helpdesk x6598